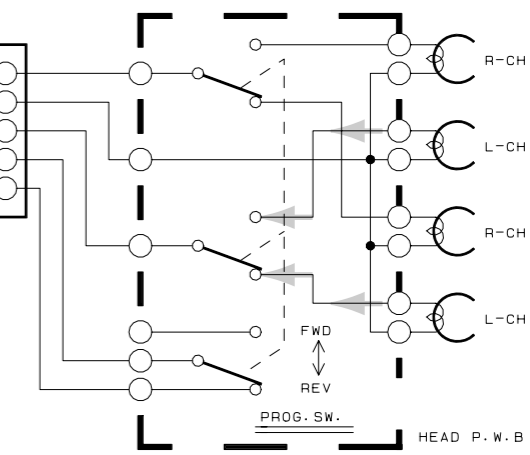
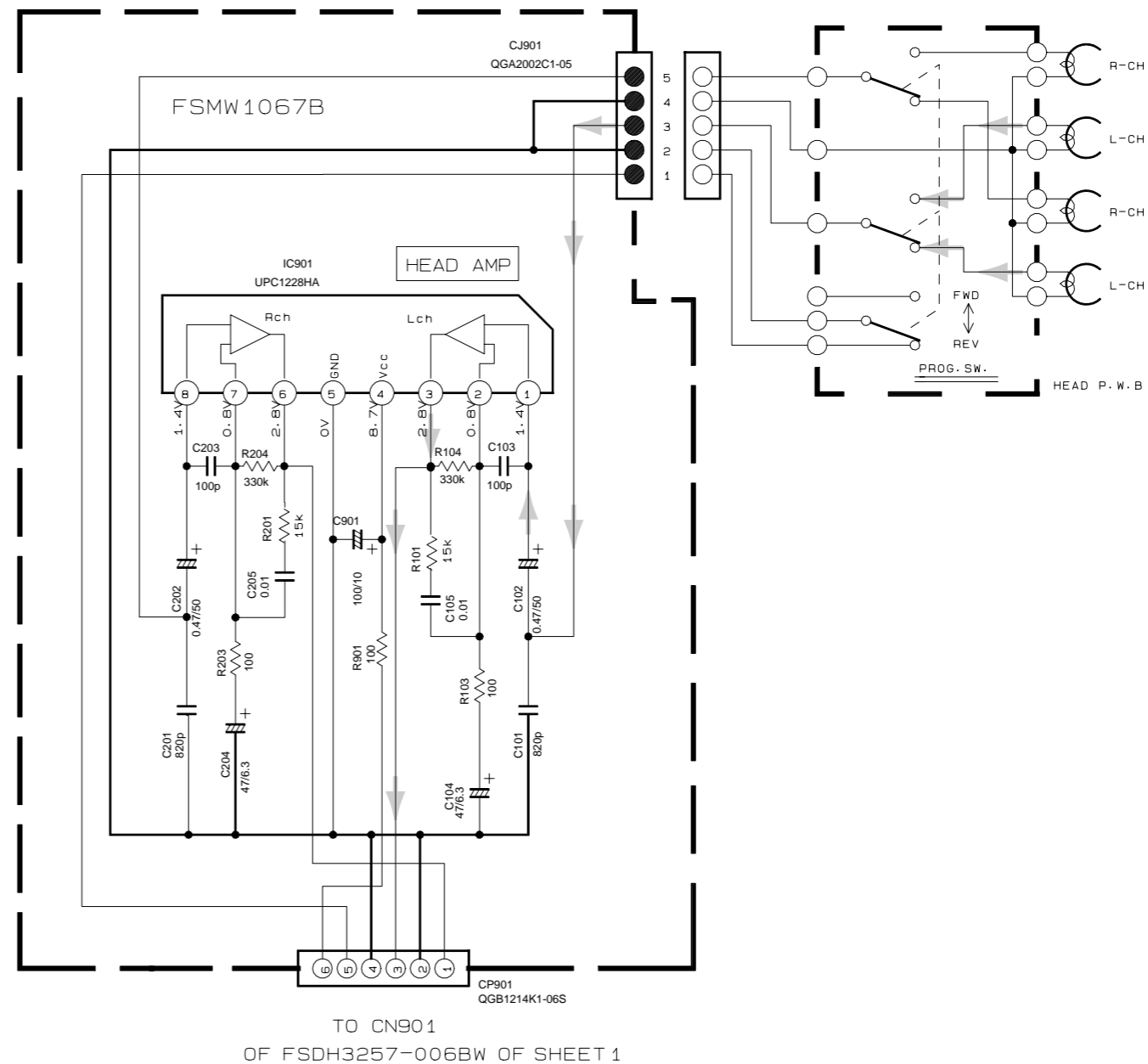
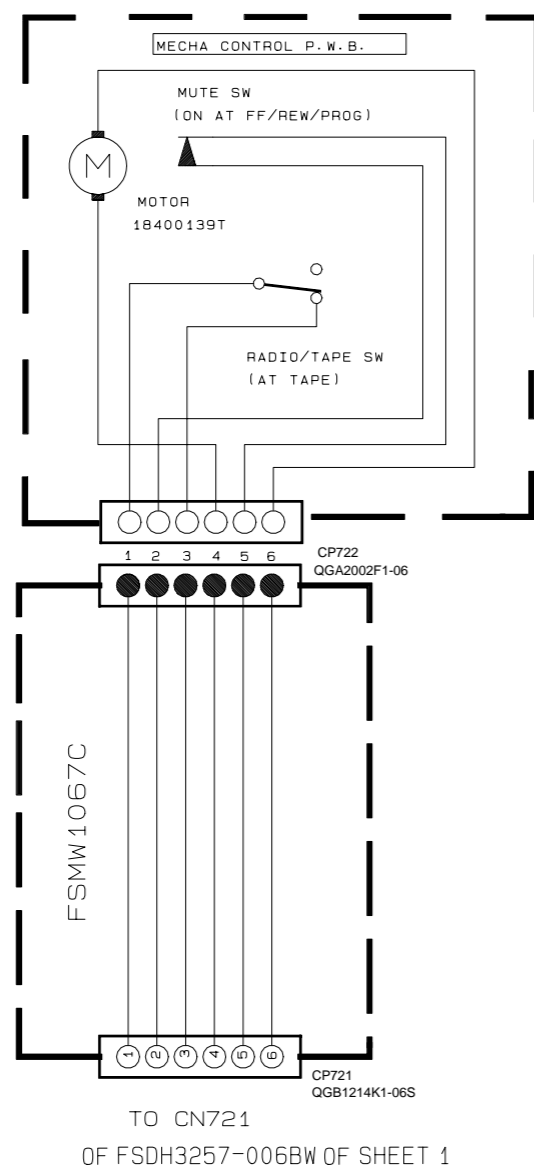


< MEMO >

Standard schematic diagrams

■ Head amplifier circuit

5
4
3
2
1



➔ Tape PB/Main signal

Receiver & operation switch circuit section

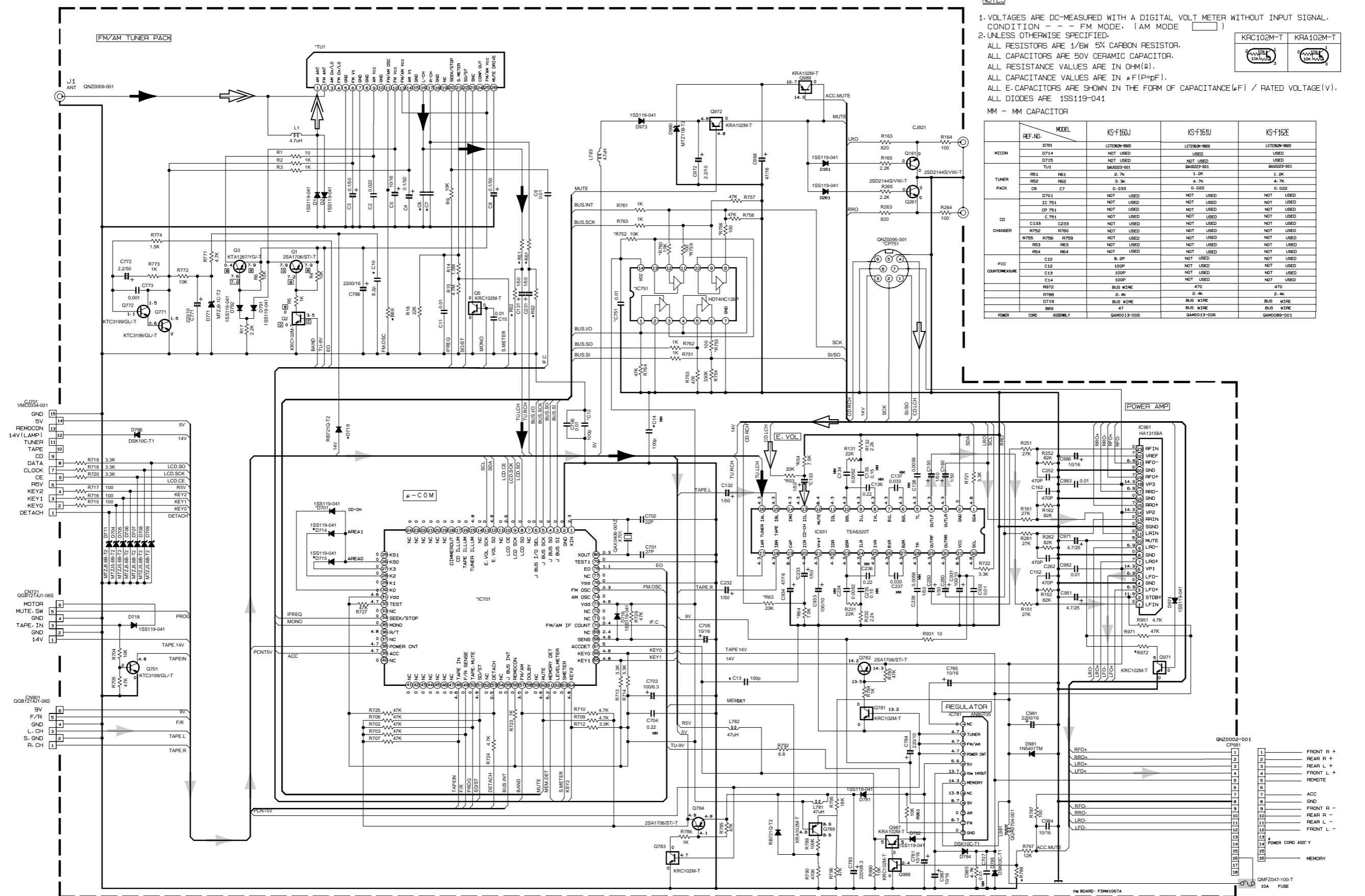
NOTES

- 1. VOLTAGES ARE DC-MEASURED WITH A DIGITAL VOLT METER WITHOUT INPUT SIGNAL. CONDITION - - - FM MODE. (AM MODE)
 - 2. UNLESS OTHERWISE SPECIFIED.
- ALL RESISTORS ARE 1/6W 5% CARBON RESISTOR.
 ALL CAPACITORS ARE 50V CERAMIC CAPACITOR.
 ALL RESISTANCE VALUES ARE IN OHM(Ω).
 ALL CAPACITANCE VALUES ARE IN μF(P=P.F).
 ALL ELECTROLYTIC CAPACITORS ARE SHOWN IN THE FORM OF CAPACITANCE(μF) / RATED VOLTAGE(V).
 ALL DIODES ARE 1SS119-041
 MM - MM CAPACITOR

KRC102M-T	KRA102M-T

REF-NO.	MODEL	KS-F160J	KS-F161U	KS-F162E
MICRON				
D711	LC7296M-990	LC7296M-990	LC7296M-990	LC7296M-990
D714	NOT USED	USED	NOT USED	USED
D715	NOT USED	NOT USED	NOT USED	NOT USED
TU1	GM0223-001	GM0223-001	GM0223-001	GM0223-001
R51	R61	2.7K	1.0K	1.0K
R52	R62	3.3K	4.7K	4.7K
C6	C7	0.033	0.022	0.022
D701	NOT USED	NOT USED	NOT USED	NOT USED
C751	NOT USED	NOT USED	NOT USED	NOT USED
C751	NOT USED	NOT USED	NOT USED	NOT USED
C133	C233	NOT USED	NOT USED	NOT USED
R752	R760	NOT USED	NOT USED	NOT USED
R755	R756	NOT USED	NOT USED	NOT USED
R83	R83	NOT USED	NOT USED	NOT USED
R84	NOT USED	NOT USED	NOT USED	NOT USED
C10	8.2P	NOT USED	NOT USED	NOT USED
C12	100P	NOT USED	NOT USED	NOT USED
C13	100P	NOT USED	NOT USED	NOT USED
C14	100P	NOT USED	NOT USED	NOT USED
R972	BUS WIRE	470	470	470
R978	2.4K	2.4K	2.4K	2.4K
D719	BUS WIRE	BUS WIRE	BUS WIRE	BUS WIRE
R89	47	BUS WIRE	BUS WIRE	BUS WIRE
POWER	CORD	ASSEMBLY	GM0013-006	GM0013-006
			GM0013-006	GM0013-006

5
4
3
2
1



➔ FM radio signal
 ➔ AM radio signal
 ➔ CD signal
 ➔ Tape PB/Main signal

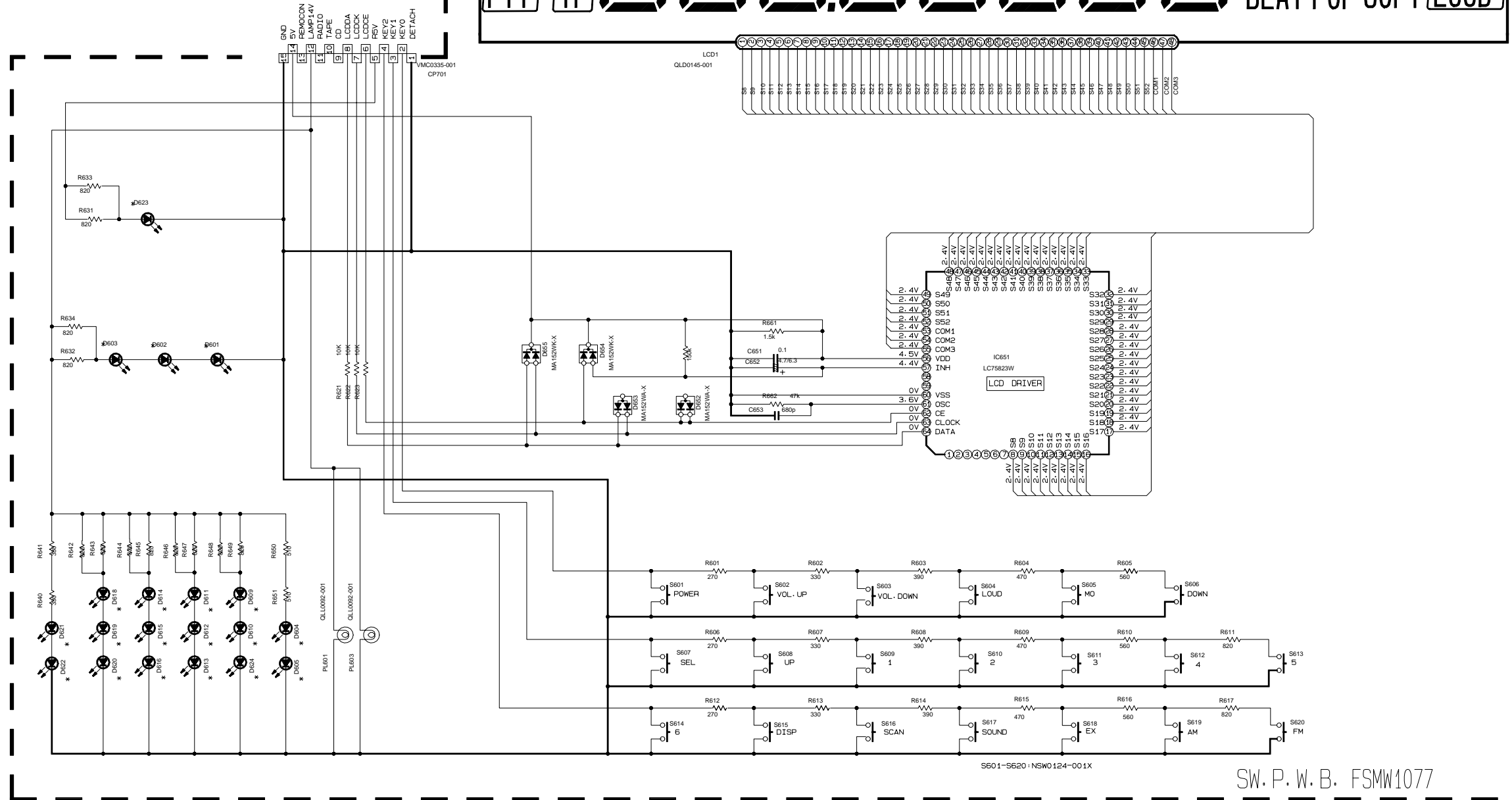
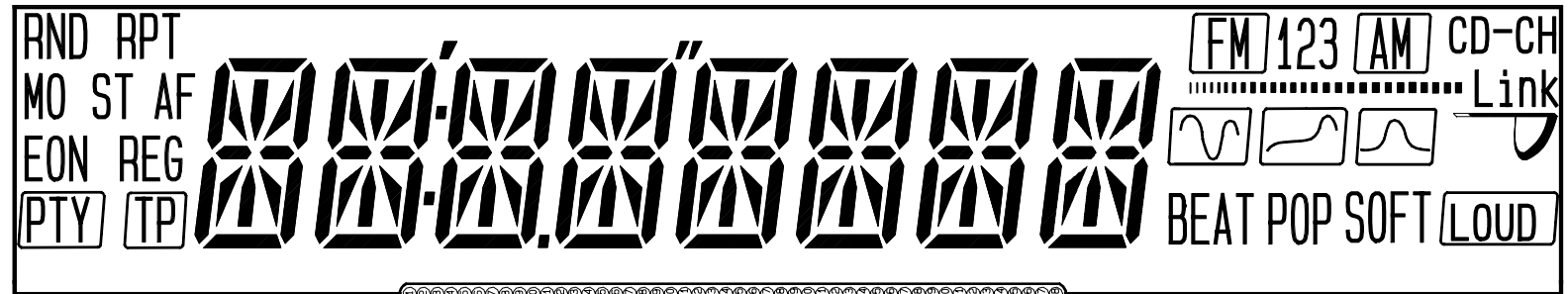
⚠ Parts are safety assurance parts. When replacing those parts make sure to use the specified one.

A B C 2-4 D E F G H

■ Display / switch circuit section

NOTES

1. VOLTAGES ARE DC-MEASURED WITH A DIGITAL VOLT METER WITHOUT INPUT SIGNAL.
CONDITION --- FM MODE
2. UNLESS OTHERWISE SPECIFIED:
ALL RESISTORS ARE 1/4W 5% CARBON RESISTOR OR 1/4W 1/10W 5% METAL GLAZE RESISTOR.
ALL CAPACITORS ARE 50V CERAMIC CAPACITOR.
ALL RESISTANCE VALUES ARE IN OHM(Ω).
ALL CAPACITANCE VALUES ARE IN μF(P=PF).
ALL E-CAPACITORS ARE SHOWN IN THE FORM OF CAPACITANCE(μF) / RATED VOLTAGE(V).



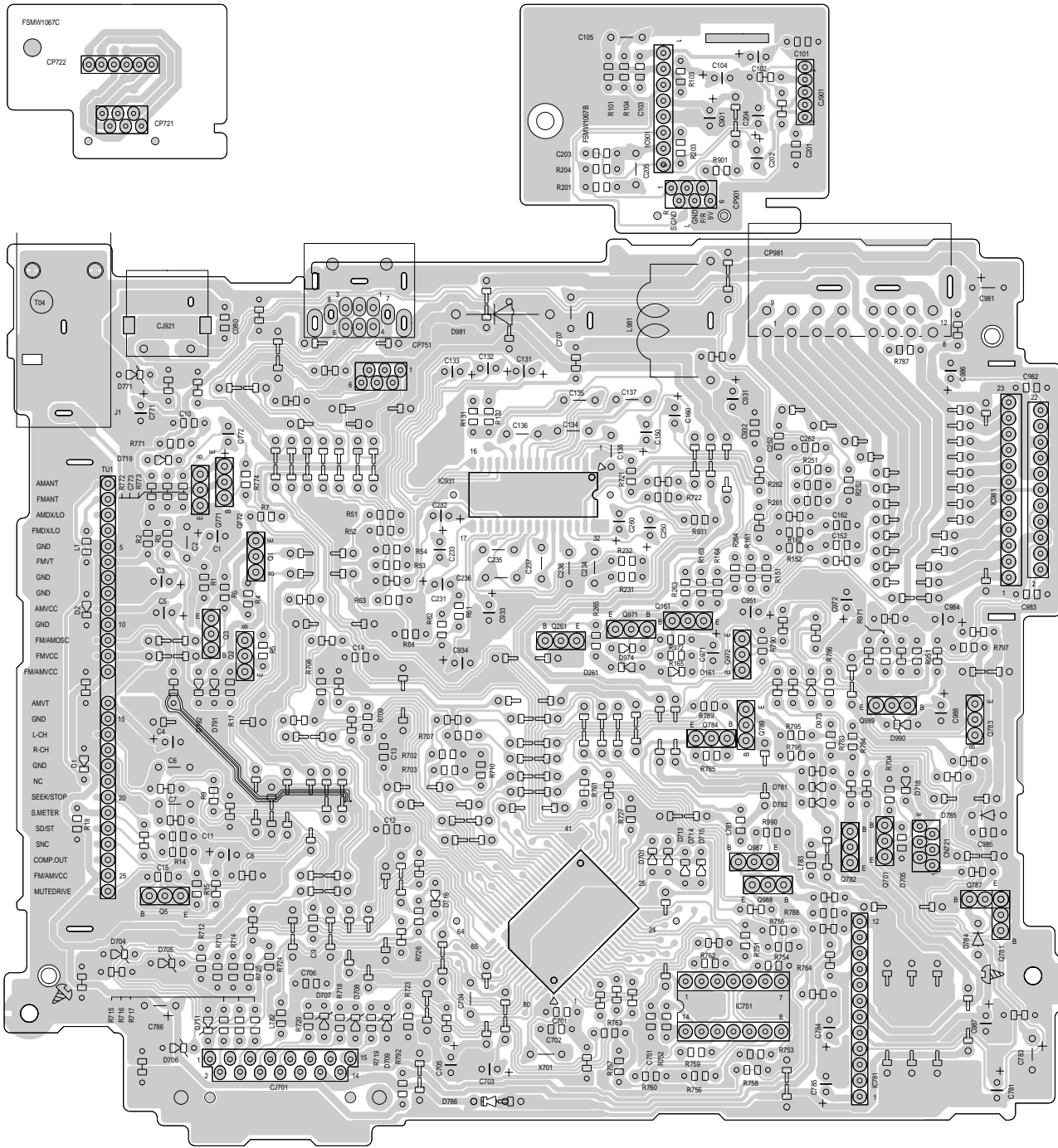
REF. NO.	MODEL	KS-F160J	KS-F161U	KS-F162E
D601 - D622/D624	SML-310V1/K/-X	LNJ3036681/1-3/X	LNJ3036681/1-3/X	LNJ3036681/1-3/X
D613	LNJ3036681/1-3/X	LNJ3036681/1-3/X	LNJ3036681/1-3/X	LNJ3036681/1-3/X
D623	SML-310LT/MV/-X	SML-310LT/MV/-X	SML-310LT/MV/-X	SML-310LT/MV/-X

SW.P.W.B. FSMW1077

Printed circuit boards

■ Main board

5



4

3

2

1

A

B

C

2-6

D

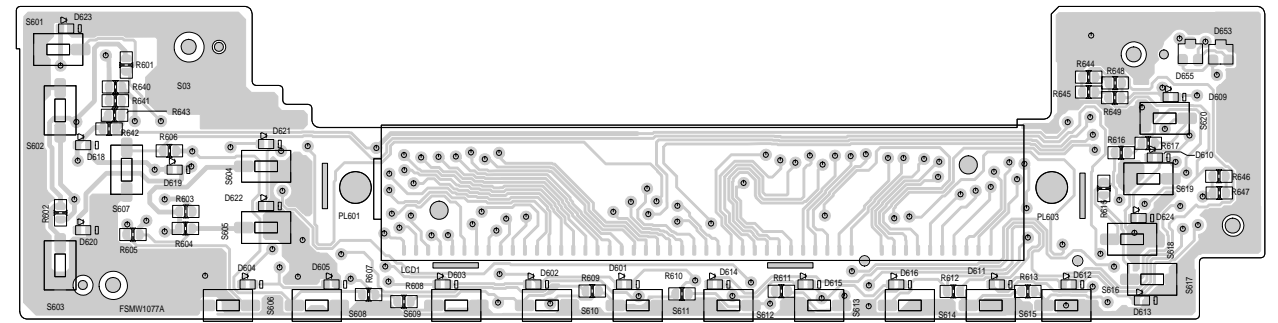
E

F

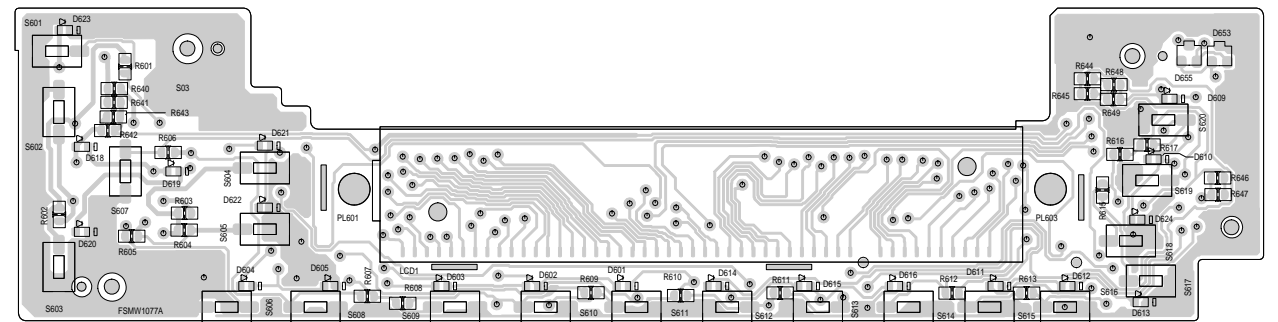
G

H

■ Front board(Forward side)



■ Front board(Reverse side)

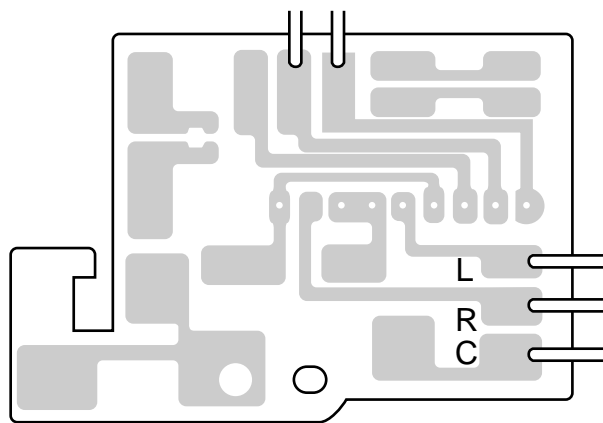


■Cassette mchanism boards

Mute Board



Direction switch board



5

4

3

2

1

A

B

C